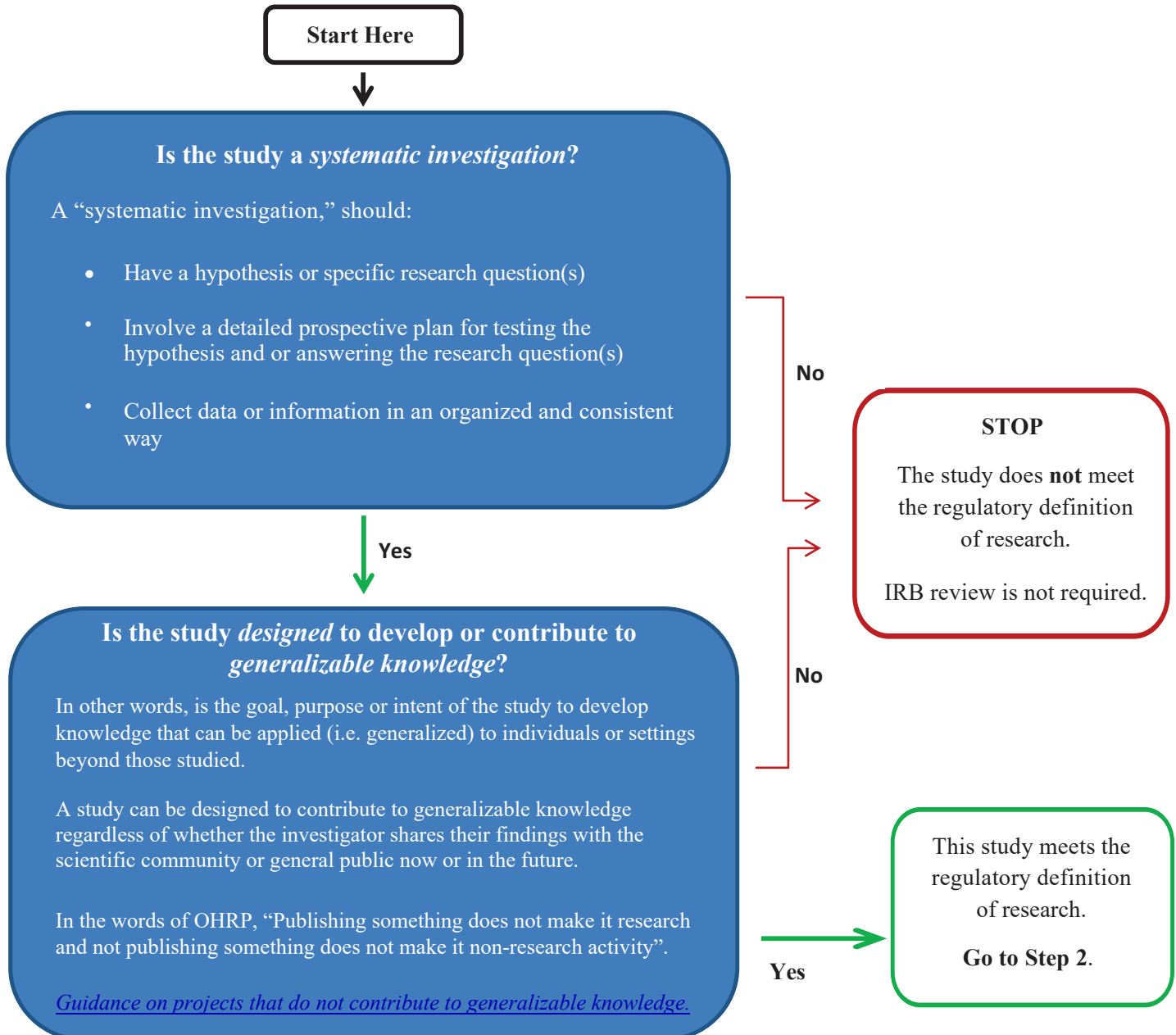


All projects involving both “RESEARCH” and “HUMAN SUBJECTS” must be submitted to the Bowdoin College IRB for review and approval or exemption determination before starting any human subjects-related study procedures, including recruitment, consenting, data collection, and analysis. For guidance in determining whether your study meets both of these definitions, please follow the charts below.

Step 1: Is your project RESEARCH according to the Office of Human Research Protections (OHRP)?



If you are still unsure whether your work is considered "research", please contact us at irb@bowdoin.edu.

Step 2: Does your research involve HUMAN SUBJECTS?

Start Here

Is the information being obtained about living individuals?

No

STOP
The research does not involve human subjects.
IRB review is not required.

Yes

Yes

This project meets the regulatory definition of Research with Human Subjects.

Please send your submission to Bowdoin College's IRB for review prior to starting any study procedures.

Will you collect information through some type of *intervention* or *interaction*?

- An intervention includes all physical procedures (e.g. blood draw) and manipulations of the subject or subject's environment.
- Interactions with subjects include communication or interpersonal contact (in person or virtually).

No

Will you have access to *individually identifiable* information?

Individually identifiable means that the identity of the subject is or may readily be ascertained by the investigator or associated with the information.

Examples of individually identifiable data:

- a dataset that includes identifying information such as name, DOB, address, phone number, etc., or
- a combination of variables that would allow an investigator to readily identify individuals

Yes

No

Will you have access to *private* information?

Private information includes

- information about behavior that occurs in a context in which an individual can reasonably expect that no observation or recording is taking place (e.g. while eating dinner or chatting with friends online), OR
- information that has been provided for specific purposes (e.g. for medical care or education) by an individual and which the individual can reasonably expect the information will not be made public.

Yes

No