

Forward From Here

Stories, Updates, and Opportunities that Shape the Campaign for Bowdoin



Now more than two years past the public launch, and heading into the final two years of *From Here: The Campaign for Bowdoin*, the campaign remains on track and even ahead of important mileposts as it rounds the turn.

Considering all the global challenges that arrived soon after the campaign launch on February 6, 2020, our collective progress is a testament to the remarkable loyalty, commitment, and generosity of the Bowdoin community.

At this moment, the campaign stands at \$429.3 million in gifts and pledges, or 85.9 percent of the \$500 million goal. With the boost of the First Promise Challenge, detailed in the pages that follow, gifts and pledges for financial aid stand at \$141.3 million, or 70.6 percent of the \$200 million goal; commitments for comprehensive aid are at \$18.5 million, or 53 percent of the \$35 million goal. Gifts and pledges for the

second promise—a transformative academic experience—have reached \$65 million, or 78.3 percent of the \$83 million target. Commitments for the third promise, which offers students the tools and support for a meaningful life and career after Bowdoin, stand at \$17.6 million, or 47.6 percent of the \$37 million goal. Annual gifts and pledges total \$54.3 million, or 69.7 percent of the campaign's annual giving target.

In short, the campaign is in a great place, but there are still more hard miles to run. With the continued support of alumni, parents, families, and friends, the finish line will soon be in sight.



First Promise Challenge Wraps with Success, Impact

“Bowdoin means the world to me, as it obviously does to you. Please know how thrilled I am to be giving back to this wonderful institution.”

—Peter Webster '62

The First Promise Challenge reached a successful conclusion in January, less than six months after its launch last fall. Through the challenge, an anonymous donor is making matching gifts of \$100,000 to fifty individual endowed funds, for a total matching gift of \$5 million. As the donor hoped, the challenge inspired other members of the Bowdoin community to step up their efforts to support financial aid and comprehensive aid for students by creating new endowed funds or, in a few instances, reinvigorating existing endowments with significant new gifts.

In one case, the challenge motivated a donor who planned to endow a fund through his estate to make an outright gift now, during his lifetime, instead. As Peter Webster '62 explained in a hand-written note to the anonymous donor, his planned gift “was earmarked for the creation of the Webster Family Scholarship. However, upon learning of your challenge, I have created the fund now with the impetus of your challenge. . . . Bowdoin means the world to me, as it obviously does to you. . . . Please know how thrilled I am to be giving back to this wonderful institution. You played a critical part in that gift.”

In addition to seven anonymous participants in the First Promise Challenge, the donors and funds that have qualified for matching gifts include:

Gregory '83 and Jennifer Baldwin Comprehensive Aid Fund, provides comprehensive aid outside tuition, room, and board for Bowdoin students. Established by Greg Baldwin '83 and Jennifer Baldwin.

Alice Manson and James Evans Barlow Scholarship Fund, provides financial aid for Bowdoin students. Established by Bob Barlow '50.

Burke Albers Family Scholarship Fund, provides financial aid for Bowdoin students who have experienced chronic illness, adversity, or trauma. Established by Alison Burke Albers '94 and Jeff Albers.

BRCO Scholarship Fund, provides financial aid for Bowdoin students. Established by Jeff Norris '86, P'25 and Laura Newman '86, P'25.

David M. Cohen '64 and Janis B. Cohen Scholarship Fund, provides financial aid for Bowdoin students from Maine. Established by David Cohen '64 and Janis Cohen.

Cornick Scholarship Fund, provides financial aid for Bowdoin students who have overcome hardship. Established by Ken Cornick '94.

Costin Family Scholarship Fund, provides financial aid for Bowdoin students. Established by Tom Costin '73, P'02 and Cynthia Conlon Costin '73, P'02.

The Coyle Family Scholarship Endowment Fund, provides financial aid for Bowdoin students. Established by Chris Coyle P'23, Lelei Coyle P'23, and Jackson Coyle '23.

Crowley Family Scholarship Fund, provides financial aid for Bowdoin students from the Worcester, Massachusetts, and Sun Valley, Idaho, areas. Established by Ralph Crowley, Jr. '73, P'02, P'09, P'11.

Brian '04 and Sanida Dunn '05 Comprehensive Aid Fund, provides comprehensive aid outside tuition, room, and board for Bowdoin students. Established by Brian Dunn '05 and Sanida Dunn '04.

Donald C. Ferro Scholarship Fund, provides financial aid for Bowdoin students from public schools west of the Mississippi River. Established by Don Ferro '68, P'96 and Sue Ferro P'96.

Gauron Family Fund, provides financial aid for Bowdoin students from Maine or Massachusetts. Established by Paul Gauron '69, P'03.

Gehringer Scholarship Fund, provides financial aid for Bowdoin students. Established by Grant Gehringer '73.

Girard Family Fund, provides financial aid for Bowdoin students from Maine or New Hampshire. Established by Mark Girard '82 and Kim Girard '84.

Goldman Family Scholarship Fund, provides financial aid for Bowdoin students. Established by Mitch Goldman '72, P'03, Susan Sargent P'03, Jenna Goldman '03, and Justin Manus.

Greig Family Scholarship Fund, provides financial aid for Bowdoin students. Established by Henry "Hank" Greig II '84.

Hupper Family Scholarship Fund, provides financial aid for Bowdoin students. Established by Mrs. John R. Hupper P'83, W'50 and Craig Hupper '83.

Fori and Robert Kay Scholarship Fund, provides financial aid for Bowdoin students. Established by Bob Kay P'22 and Fori Kay P'22.

George W. and Lolita D. Kern Scholarship Fund, provides financial aid for Bowdoin students. Established by the George W. and Lolita Kern Educational Assistance Fund and Sarah McCready Boston '98 and Jane Houston McCready P'98 for the fund.

Robert F. Kingsbury '34 Scholarship Fund, provides financial aid for Bowdoin students majoring in STEM fields. Established by Martha Bate.

Knoff Family Graduate Scholarship in Psychology, provides financial aid for Bowdoin students majoring in psychology. Established by Howard Knoff '76.

Knowlton Family Scholarship Fund, provides financial aid for Bowdoin students. Established by Lori Knowlton '91.

The Drs. Ernest and Ellen Kornmehl Family Scholarship Fund, provides financial aid for Bowdoin students who are first-generation-to-college and first-generation Americans. Established by Ernest Kornmehl P'23 and Ellen Kornmehl P'23.

Clare McWilliams Lyne Scholarship Fund, provides financial aid for Bowdoin students interested in environmental studies. Established by Laurence Lytton '81.

Debi and Joe Marrow Visitation Support Fund, provides comprehensive aid for Bowdoin students' families to visit campus for Commencement or Family Weekend. Established by Joe Marrow '86, P'21 and Debi Marrow P'21.

(Continued on next page)

(Continued from previous page)

T. Penny Martin Scholarship Fund Established by the Ryan Family, provides financial aid for Bowdoin students. Established by Alison DiSalvo Ryan '99 and Brendan Ryan '99.

Scott and Susan Mazur Scholarship Fund, provides financial aid for Bowdoin students. Established by Scott Mazur '95 and Susan Mazur '96.

Margaret J. Williams P'71, P'72 and Lindsay T. McQuater '71 Scholarship Fund, provides financial aid for Bowdoin students from underrepresented or underprivileged backgrounds. Established by Greg McQuater '72.

Shelley Chessie Miller Scholarship Fund, provides financial aid for female Bowdoin students from Canada. Established by Nicholas Miller '02 and Shelly Chessie Miller '03.

Mohsen Family Scholarship Fund, provides financial aid for Bowdoin students who are children of immigrants or refugees. Established by Arya M. Amirshahi '90.

Ouzounian Family Comprehensive Aid Fund, provides comprehensive aid outside tuition, room, and board for Bowdoin students. Established by Carol Koobatian Ouzounian '87 and Souren Ouzounian.

Howard Pease '66, P'96 and Amy Hathaway Russell '96 Scholarship Fund, provides financial aid for Bowdoin students majoring in life sciences or interested in medicine or health fields. Established by Howard Pease '66, P'96.

Quimby Family Fund, provides financial aid for Bowdoin students. Established by Peter Quimby '89 and Laura Quimby '87.

Joel M. Reck Scholarship Fund, provides financial aid for Bowdoin students. Established by Joel Reck '63.

Richard Charles Roberts '55 Family Scholarship Fund, provides financial aid for Bowdoin students from the Rockland, Maine, area. Established by Dee Roberts P'90, W'55, Andrew Roberts '90, and Alex Roberts.

Joan Benoit Samuelson '79, P'12 Scholarship Fund, provides financial aid for female Bowdoin students interested in the outdoors, the environment, or climate change. Established by Katy Longley '76, Callie Curtis '72, Randy Curtis '72, and Mary Herman.

Steve '70 and Paula Mae Schwartz Scholarship Fund, provides financial aid for Bowdoin students. Established by Steve Schwartz '70 and Paula Mae Schwartz.

David and Robin Small Family Scholarship Fund, provides financial aid for Bowdoin students. Established by David Small P'23 and Robin Small P'23.

Derek and Ingrid Spence Scholarship Fund, provides financial aid for Bowdoin students who are members of or children of members of the military. Established by Derek Spence '92, P'19, P'23 and Ingrid Spence P'19, P'23.

Stauber Family Scholarship Fund, provides financial aid for Bowdoin students. Established by Bill Stauber '84.

Strauss Fund for Comprehensive Aid, provides comprehensive aid outside tuition, room, and board for Bowdoin students. Established by Bill Strauss '68 and Andrea Strauss.

Webster Family Scholarship Fund, provides financial aid for Bowdoin students from Maine. Established by Peter Webster '62, P'91, P'94.

Matthew Weiss '97 and MaryBeth Walsh Scholarship Fund, provides financial aid for Bowdoin students interested in STEM fields. Established by Matt Weiss '97.



**2022 HONORARY DEGREE RECIPIENTS**

Clockwise from top left: Katherine Bradford; Raquel Jaramillo (R. J. Palacio) '18; Laurie Gagnon Lachance '83, P'13; Joan Benoit Samuelson '79, P'12; and Janet Langhart-Cohen



Leaders in All Walks of Life

FIFTY YEARS OF WOMEN AT BOWDOIN

Leaders in All Walks, Contributions in All Ways

All year long, Bowdoin has recognized and celebrated the extraordinary contributions of women to the College, their communities, and the larger world. In September, the *Leaders in All Walks of Life: 50 Years of Women at Bowdoin* program began with a session called “Using Our Voices: The Bowdoin Experience of Women of Color,” in which alumnae across five decades shared how their time at Bowdoin shaped their future personal and professional lives. Participants included Tawana Cook Purnell '75, Gwendolyn Stretch '75, Terry Guen '81, Ebitari Isoun Larsen '94, Krista Sahrbeck '98, Shanique Brown Kilgallon '04, Joy Lee '07, Coretta King '12, Terrancia Holmes '13, Golden Owens '15, Praise Hall '20, and Adaiah Hudgins-Lopez '18.

This spring, the College announced its 2022 Alumni Council and Common Good awards, which include recognition of the contributions of four Bowdoin women: Common Good Award recipient Linda Nelson '83, a groundbreaking champion of the arts in Maine; Alumni Service Award recipient D. Ellen Shuman '76, pioneering institutional investor, College leader, and mentor for many other alumnae; and Alumni Award for Faculty and Staff recipients Sarah McMahon, associate professor of history, and

Kate Stern, associate dean of students for inclusion and diversity and director of the Center for Sexuality, Women, and Gender. Similarly, this year's slate of honorary degree recipients consists of five exceptional women: artist Katherine Bradford, children's author Raquel Jaramillo (R. J. Palacio), college president Laurie Lachance '83, P'13, journalist and social activist Janet Langhart-Cohen, and Olympic champion Joan Benoit Samuelson '79, P'12.

Gifts from women—and honoring women—made a particularly deep impact on the College community this year as well. A fund created by Katy Longley '76, Callie Curtis '72 and husband Randy Curtis '72, and Mary Herman, honoring Joan Benoit Samuelson '79, P'12, and another established by Alison DiSalvo Ryan '99 and Brendan Ryan '99 honoring Professor Penny Martin, will both provide financial aid for Bowdoin students. Noni Strauss, twin sister of Ted Strauss '65, committed nearly her entire estate to the Janice Filipowicz Strauss, William Theodore Strauss III, and Nona Dickey Strauss Memorial Scholarship Fund. And seventy-one alumni have contributed over \$268,000 toward the Leaders in All Walks of Life Fund, a commemorative annual fund that supports current financial aid.



Neil Martin '65

Classic Cars, Mismatched Sneakers, and a Gift for Bowdoin Students

Owner of the classic car mecca Goldenrod Garage in Freeport, Maine, the late Neil Martin '65 never shied away from attention. He might have shown up at a wedding, for instance, in a powder blue vintage Cadillac with extravagant tail fins, wearing his trademark colorful, mismatched sneakers and suspenders. Martin also was partial to grand gestures—for his godson's sixteenth birthday, Martin presented him with a classic convertible, a gift Martin had "promised" the young man when visiting him as a newborn in the hospital sixteen years before. Equally erudite when talking about car racing or current events, Martin was dubbed "the professor" by his race car colleagues.

Martin's close friend (and the mother of his godchildren), Nina Fuller, believes that Martin's experience at Bowdoin had much to do with his generosity to others. Martin was a first-generation college student and financial aid recipient from a family of modest means in Bangor, and, according to Fuller, "his scholarship from Bowdoin was a lifetime gift. Neil never stopped appreciating it." Martin particularly cherished the lifelong bonds he shared with his classmates and other Bowdoin friends. In 2015, Martin established an endowed fund at the College, the Neil B. Martin Scholarship Fund, through his estate plan, and when he passed away in October 2020, he left over \$450,000 to the fund. In addition to being remembered for his classic cars and his colorful persona, Martin will be known among his many loving friends, family, and classmates for his support for current and future Bowdoin students, particularly those who are first generation to college or from Maine.

Class Scholarship Fund Honors Charlie Prinn '61

The College as a whole, and the Class of 1961 in particular, suffered a profound loss at the sudden passing of Charlie Prinn '61 this past fall. Charlie's long list of honors and accolades from the College, including the Alumni Service Award, Robert Cross Award, Polar Bear Award, and Foot Soldier of Bowdoin Award, only hinted at his devotion to Bowdoin and to his fellow Polar Bears. "It's difficult to put into words just how important Charlie was to our class," explained classmate Joel Sherman '61. "He was the glue that held us together for sixty years." Ted Fuller '61, who cofounded with Charlie the Early Chow Society, a popular lunchtime lecture series on campus for alumni and community members, added, "Charlie was a master of roasting the audience as well as the speaker, and that is what made the society so successful. We never knew what he was going to say—only that it would be clever and funny." Sherman concluded, "To say that everyone loved Charlie is true, but it is also a tremendous understatement."

Soon after Charlie's passing, his classmates renamed the Class of 1961 Scholarship in his memory, and an outpouring of support for the Charles E. Prinn III Class of 1961 Scholarship Fund soon followed. More than eighty of Charlie's classmates, friends, and family members have contributed over \$16,000 to the fund in his memory, recognizing a man who touched so many lives, and strengthened the connections among so many members of the Bowdoin community, for so long.



Charlie Prinn '61



Lobsters and Crickets Beware

Paller Family Renews Support for Neuroscience Fellowships

What do lobster hearts, crab nervous systems, cricket hearing, mouse locomotion, goldfish sight and smell, and maternal rat behavior have in common? The Paller Neuroscience Research Fellowship Program. For twenty years, Paller Fellowships have enabled Bowdoin neuroscience students to engage in original research in campus faculty labs, working with faculty mentors Patsy Dickinson, Hadley Horch, and Manuel Diaz-Rios, among others. Paller Fellows also regularly attend the Annual Meeting of the Society for Neuroscience, and often their projects culminate in departmental honors. “The Paller Fellowships have had a remarkable impact on the students in the Neuroscience Program,” Professor Dickinson explains. In addition to the lab work, “having the chance to attend a national meeting is an opportunity that few undergraduates are offered; they have all given outstanding presentations of their own research as well as been able to connect with other neuroscientists from around the world.”

Established in 2002, the Paller Fellowship program was the brainchild of the late Alan Paller P’01, Marsha Paller P’01, Dr. Channing Paller ’01, and Professor Dickinson. Since then, more than thirty Paller Fellows have gone on to careers in health, medicine, and the life sciences, many receiving MD or PhD degrees and making their mark as clinicians, as researchers, and in other critical roles. As the program enters its third decade, the Paller family has once again demonstrated their support for these important opportunities for neuroscience majors. Channing and Marsha Paller recently infused the program with a spendable gift of \$100,000 through the Mann-Paller Foundation, which will ensure that many more students for years to come will have access to these same research opportunities: lobster hearts, cricket hearing, and the mysteries of behavior and the brain that they unlock.

Other New Endowed Funds

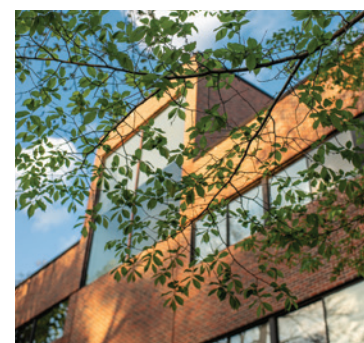
Since December 15, 2021

Bernard J. Beaudoin ’62 Family Scholarship Fund, provides financial aid for Bowdoin students majoring in the natural sciences, established by the estate of Bernie Beaudoin ’62.

Drs. Thomas ’80 and Cheryl Mitchell ’82 Scholarship Fund, will provide financial aid for Bowdoin students, established by Tom Mitchell ’80 and Cheryl Menice Mitchell ’82.

Everett P. Pope Lecture Fund, supports an annual lecture on foreign policy, national security, the US military, or related subjects, established by Jack Abbott ’63, P’00, Gil Barndollar ’04, and Steve Barndollar ’63, P’04, for the Bowdoin Marine Corps Society.

Kim Rubey and Nate Bride ’93 Scholarship Fund, provides financial aid for female Bowdoin students from underrepresented backgrounds or cultures, established by Nate Bride ’93.



For more information about *From Here: The Campaign for Bowdoin*, visit bowdoin.edu/fromhere.

THE CAMPAIGN FOR BOWDOIN



From here.

Bowdoin College
5700 College Station
Brunswick, Maine 04011-8448

Bowdoin