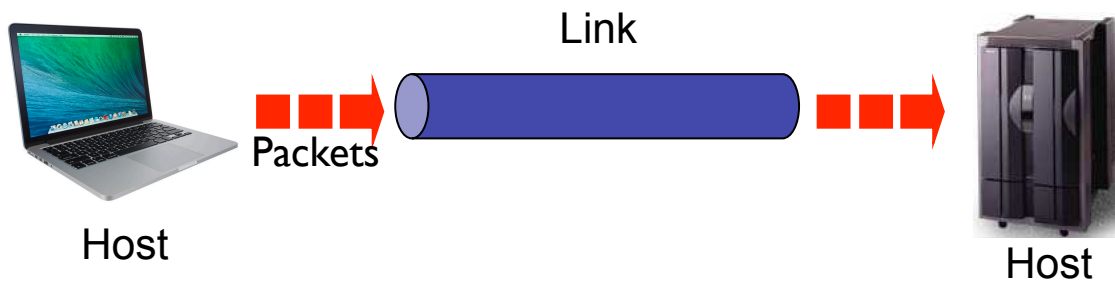


Networking Fundamentals



Network Connections



Connection Types

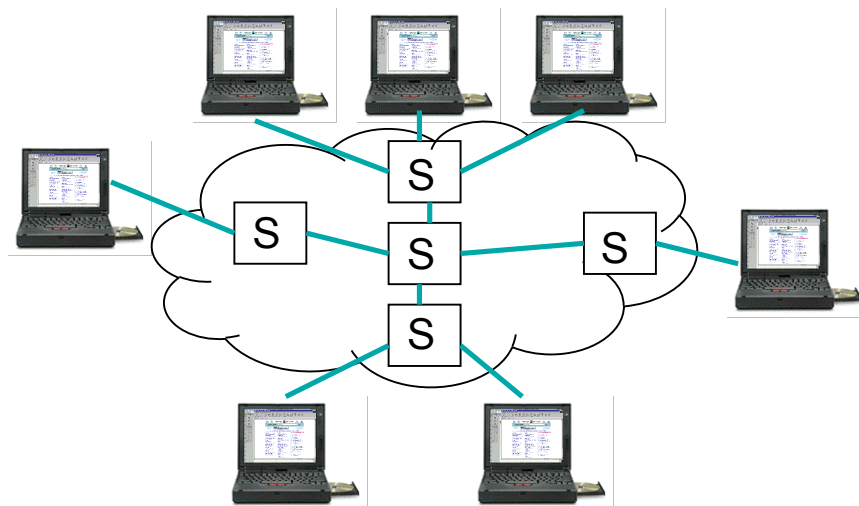
Point to Point



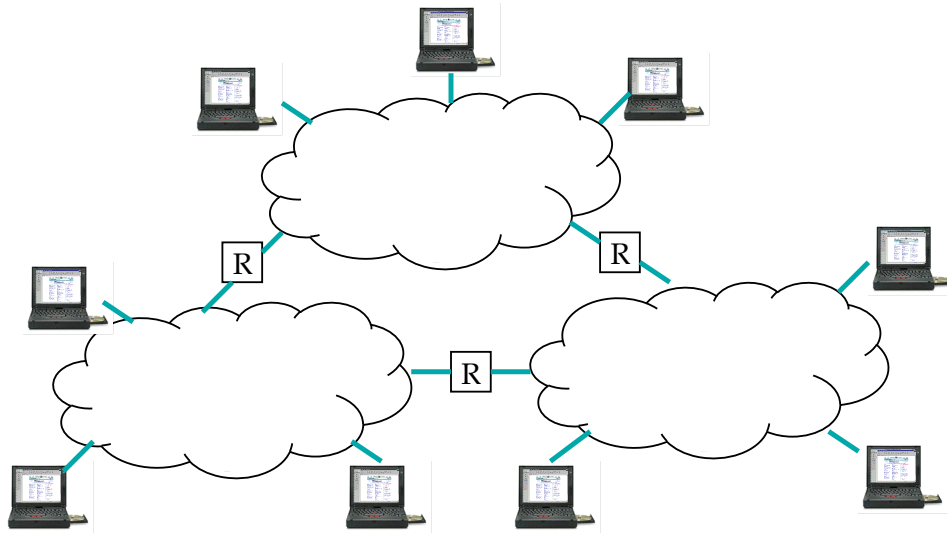
Multiple access (broadcast)



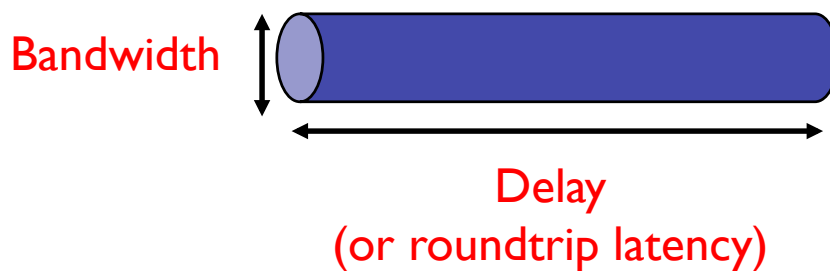
Switched Networks



Interconnection of Networks (Routers)



Network Performance



propagation delay = distance / speed of light

transmit time = message size / bandwidth

queue delay = time spent in router queues

latency = propagation + transmit + queue

Bandwidth vs. Latency

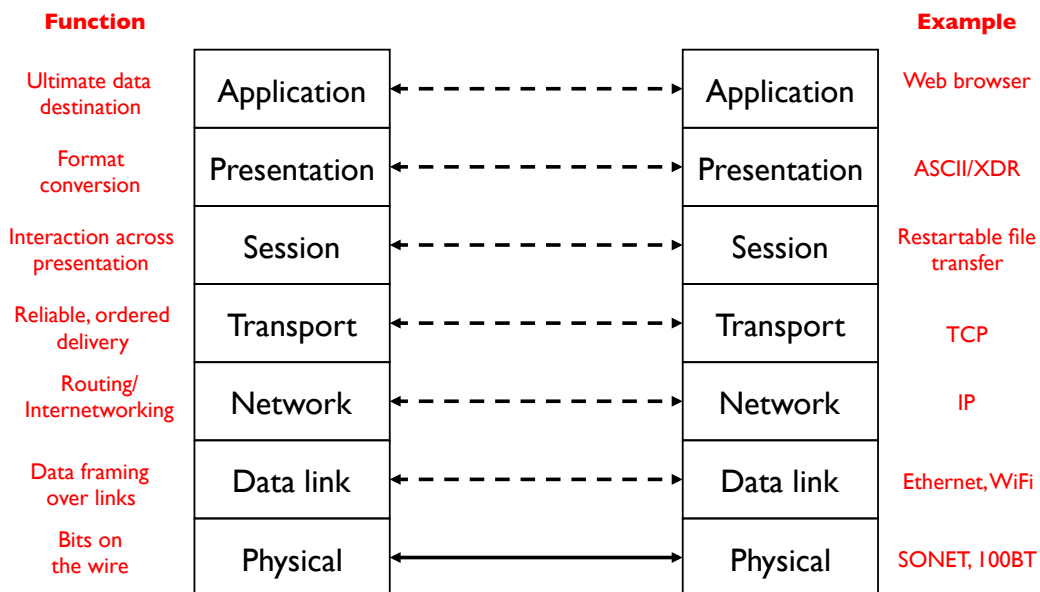
1 Byte Object

	Prop delay: 1 ms	Prop delay: 100 ms
Bandwidth: 1 Mbps	1,008 μ s	100,008 μ s
Bandwidth: 100 Mbps	1,000 μ s	100,000 μ s

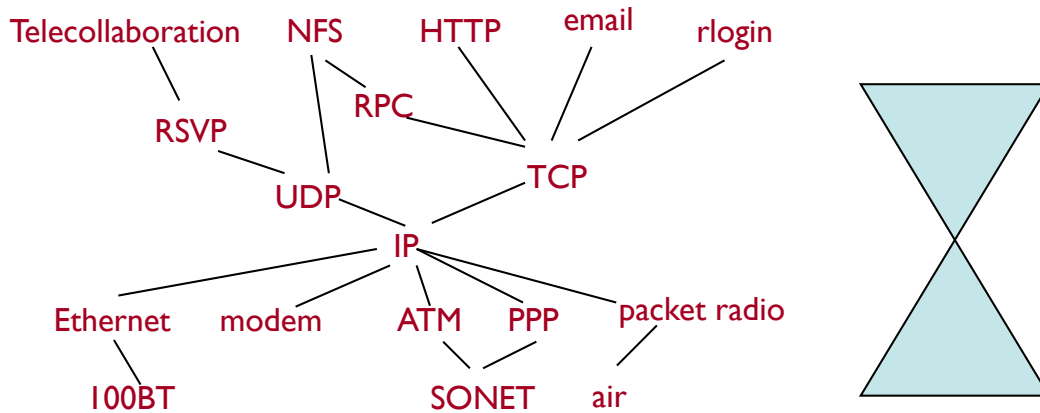
10 MB Object

	Prop delay: 1 ms	Prop delay: 100 ms
Bandwidth: 1 Mbps	80.001 s	80.1 s
Bandwidth: 100 Mbps	.801 s	.9 s

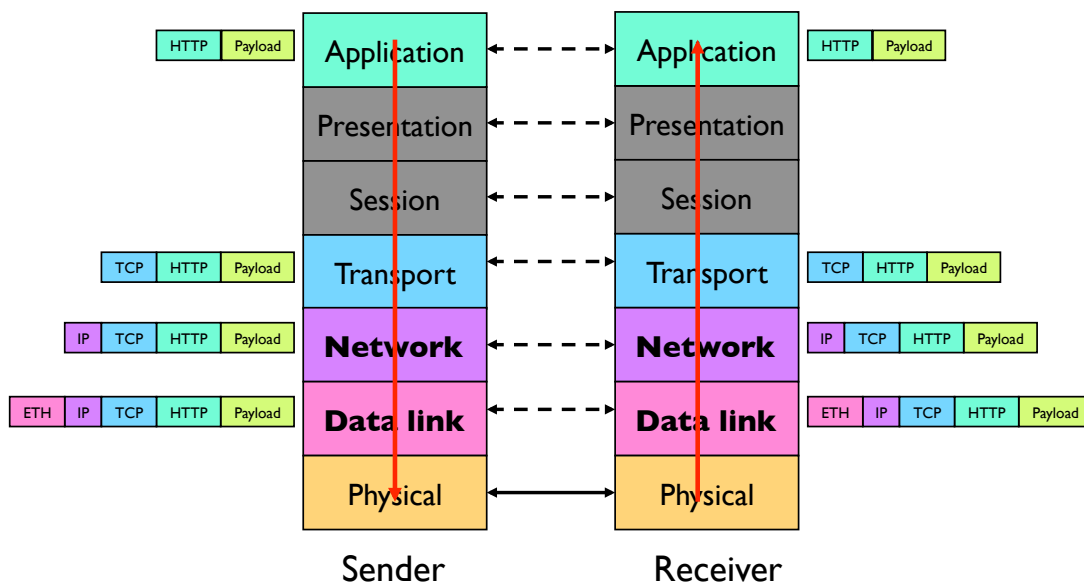
OSI Model



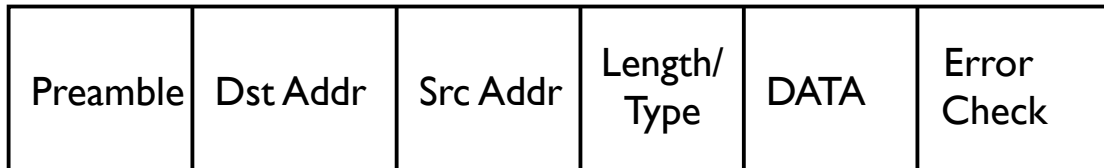
IP Hourglass



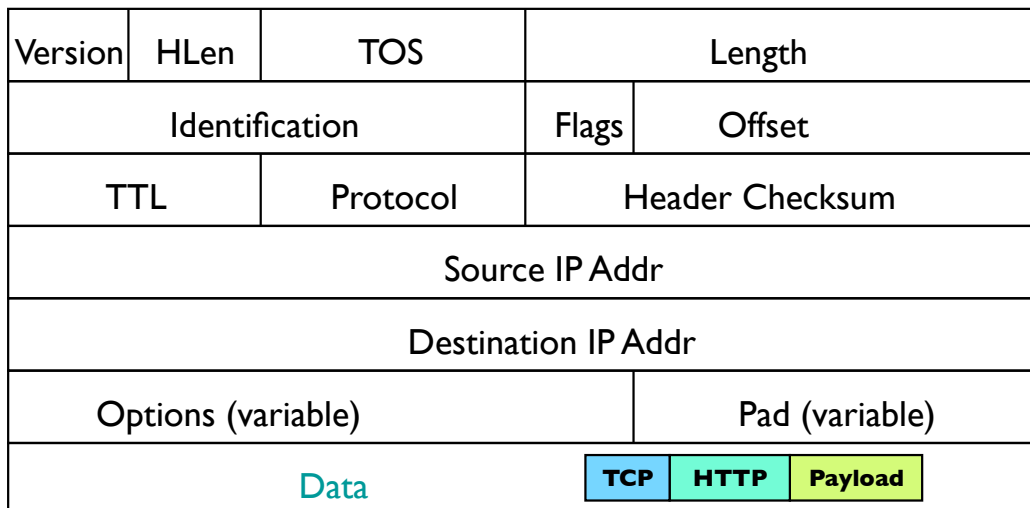
Protocol Encapsulation



Ethernet/Wifi (Data Link, Layer 2)



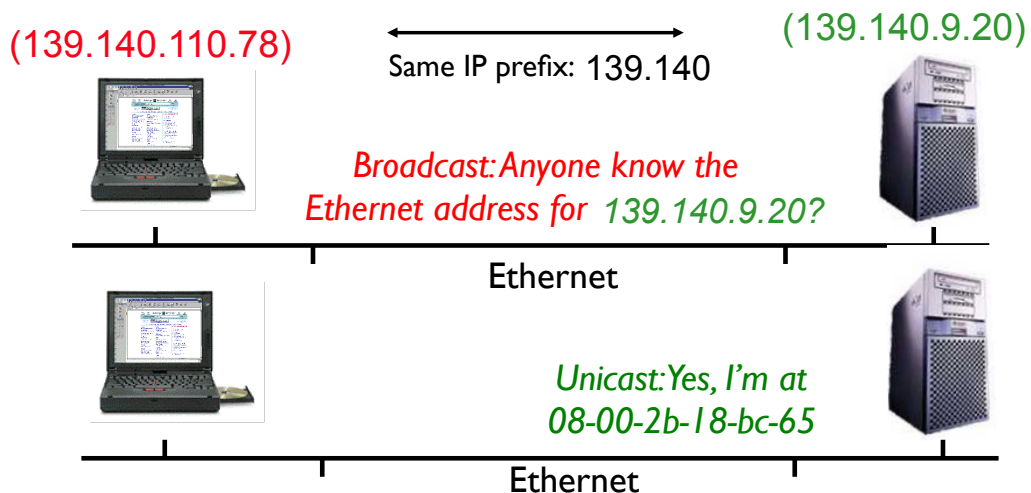
Internet Protocol (Network, Layer 3)



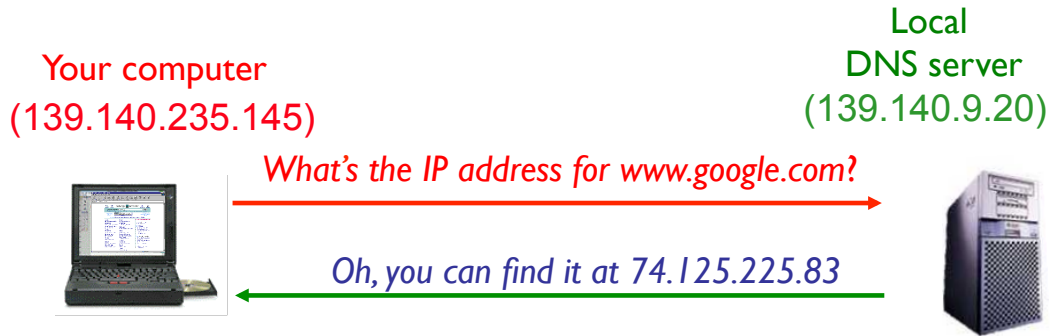
Dynamic Host Configuration Protocol (DHCP)



Address Resolution Protocol (ARP)



Domain Name System (DNS)



Routing

