

Conservation



as if people mattered

The Community Forest Model



- Secure access and rights to forest resource at community level
- Community participation in management decisions
- Community receives value and benefits from the land
- Secures permanent protection of conservation values of forestland

Klamath Termination Act 1954

Before Termination

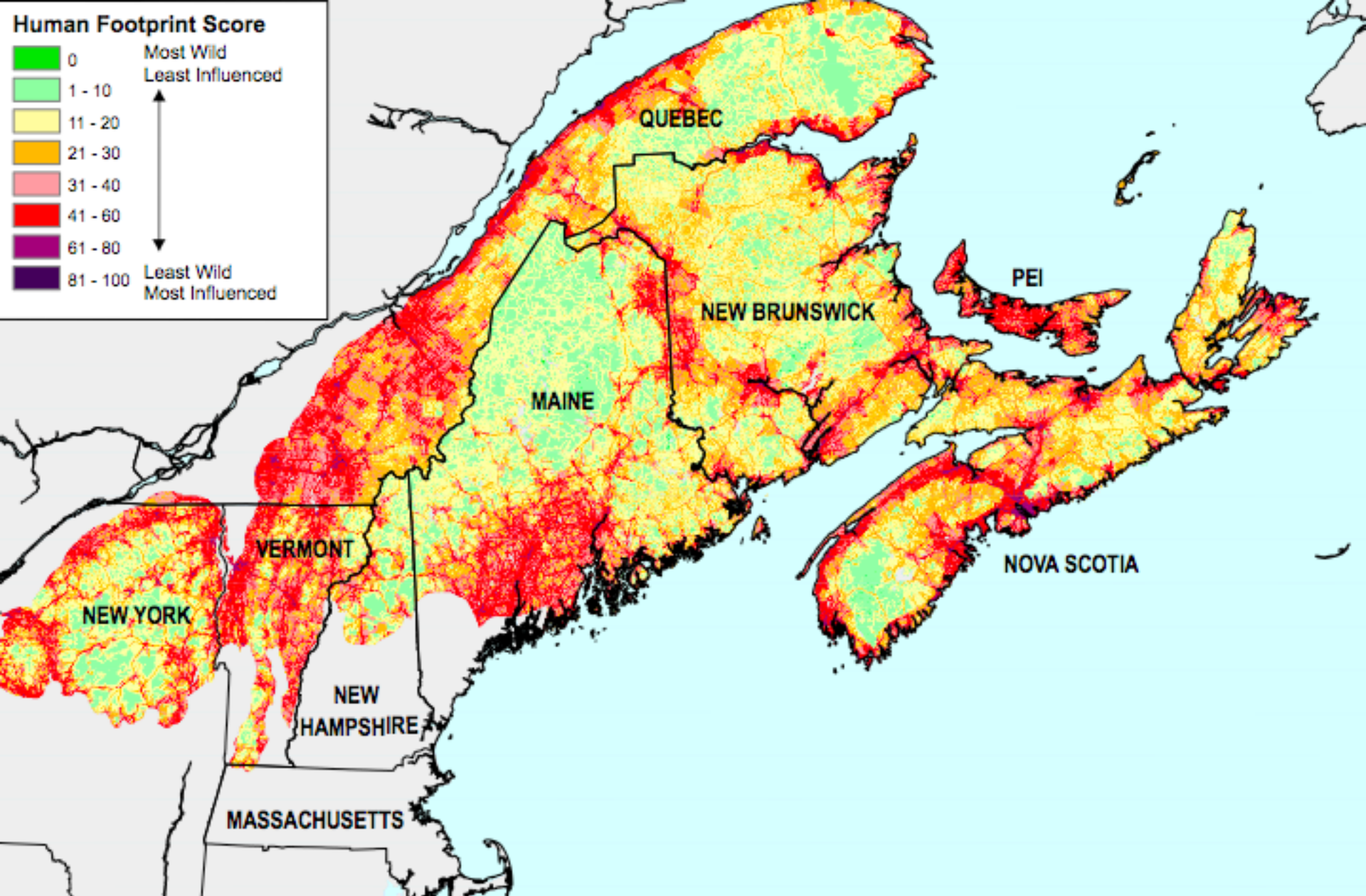
After Termination (1961-1980)

Fewer than 5 tribal members on public assistance	28% of the Klamath people did by the age of 25, and 52% did by the age of 40
--	--

Tribal membership was 93% that of non-Indians.	40% of all deaths were alcohol-related
--	--

Tribe provided jobs, per capita payments from timber sales, medical services, and housing.	Infant mortality was 25 times the Oregon state average, and 70 percent of adults did not complete high school.
--	--

Klamath Tribes were one of the wealthiest tribes in the nation.	Tribal poverty levels were the same as that of the inner-city neighborhoods.
---	--



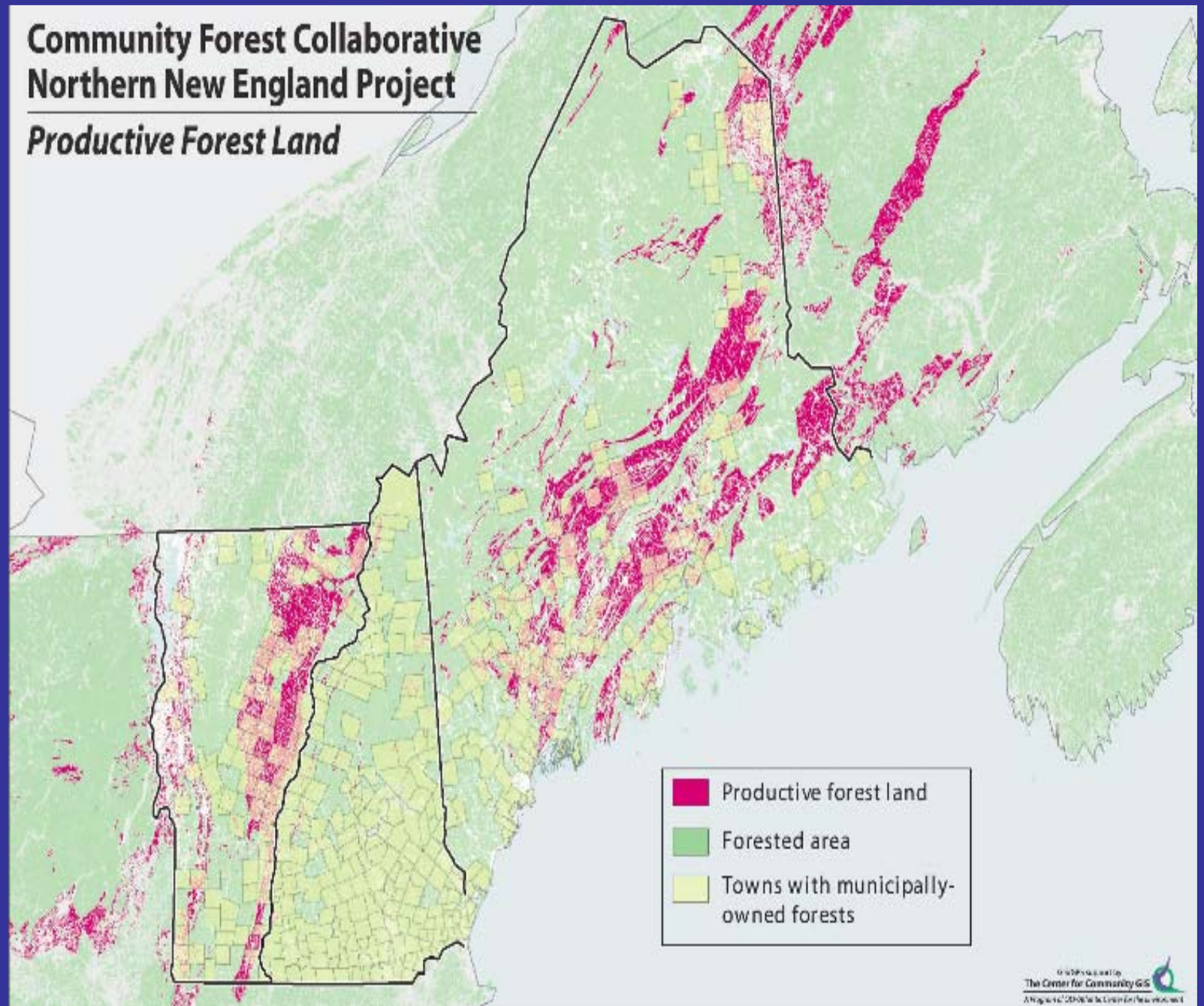
COMMUNITY FORESTS: A Community Investment Strategy





QuickTime™ and a
TIFF (Uncompressed) decompressor
are needed to see this picture.

- COMMUNITY WELL-BEING
- CIVIC LIFE
- ECONOMIC VITALITY

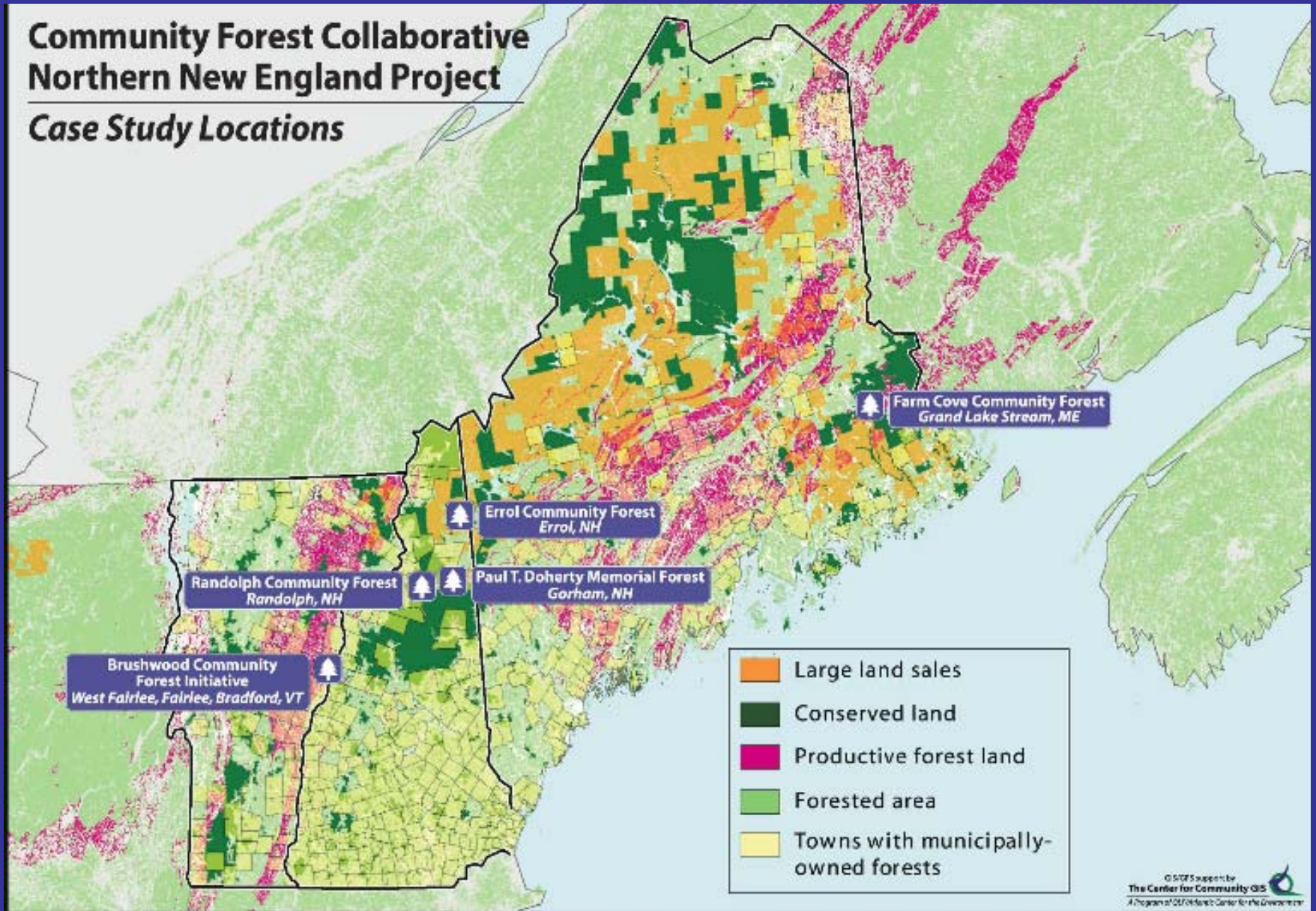
**Community Forest Collaborative
Northern New England Project**
Productive Forest Land



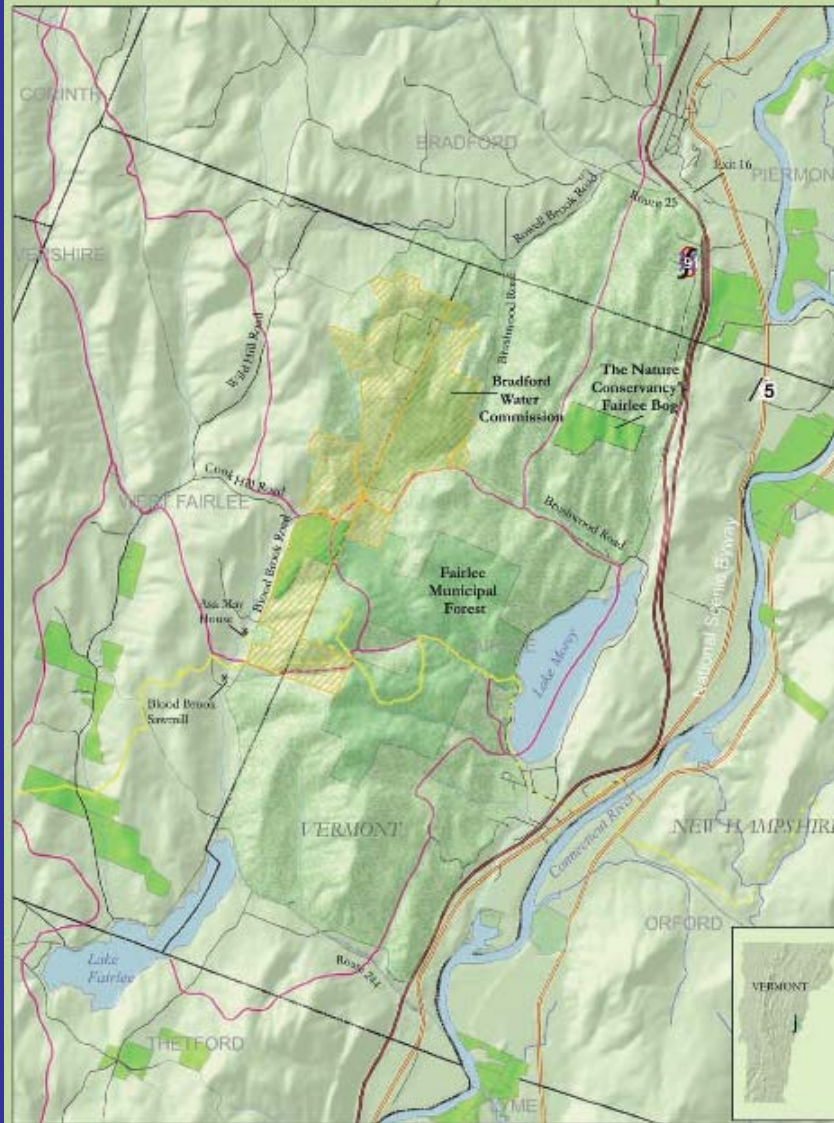
-  Productive forest land
-  Forested area
-  Towns with municipally-owned forests

Community Forest Collaborative Northern New England Project

Case Study Locations

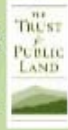


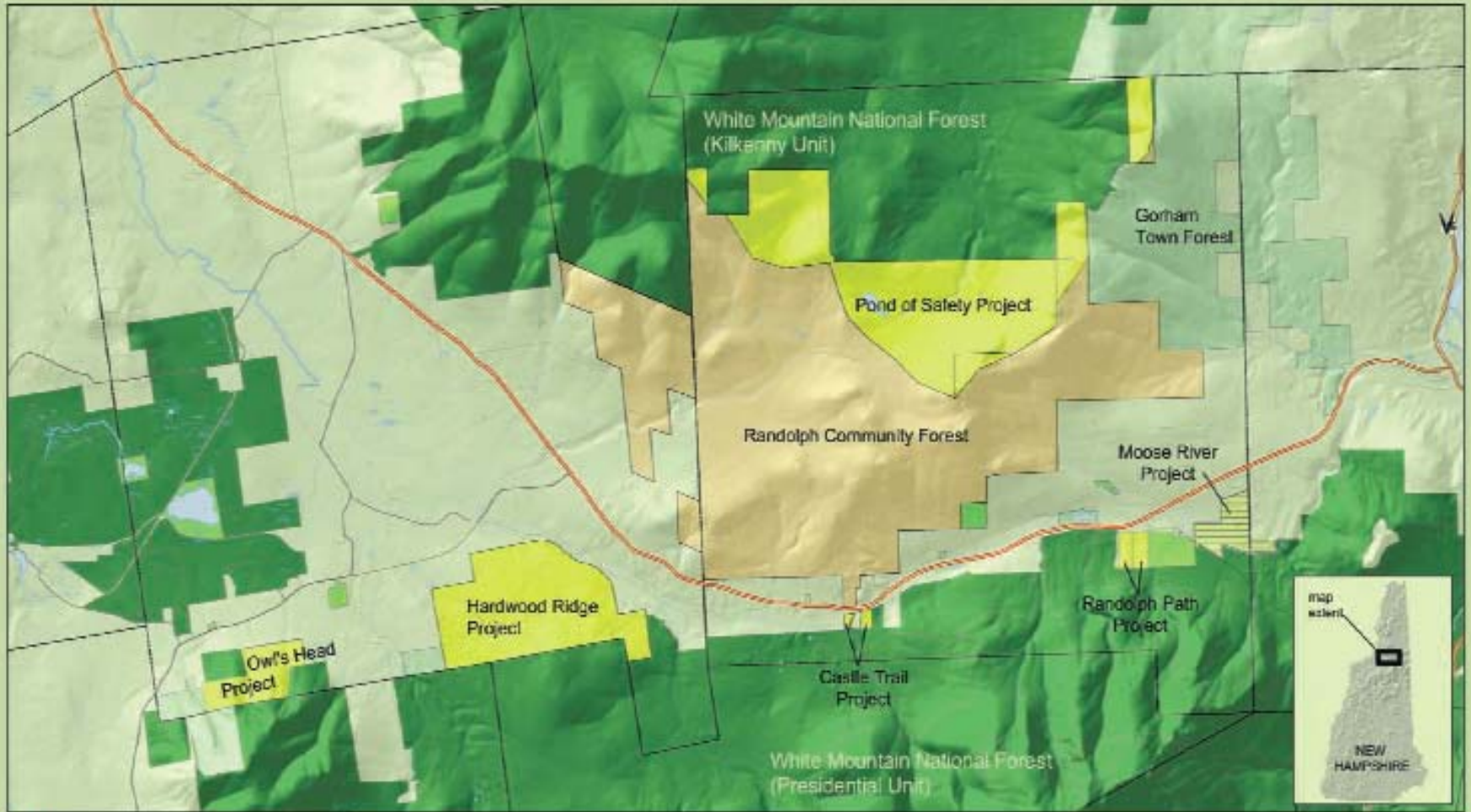
Brushwood Community Forest Locus Map



- | | |
|--|---|
| Federal Conservation Land | TPL Project in progress: Brushwood Community Forest |
| State & Local Conservation Land | Completed Cross Rivendell Trail |
| Private Conservation Land | Proposed Cross Rivendell Trail |
| Historic Sites | VAST Snowmobile Trails |
| Brushwood Forest (10,800 acres of unfragmented forest) | |

Town base data provided by NH GRANIT and VOLS. Place and road data from ESRI. Symbols for State and Private Forests provided by Two Rivers-Chauquis Regional Commission and edited by TPL. Map produced by The Trust for Public Land, Oct 16, 2009. Property boundaries are approximate. This is not a survey product.





- Federal Conservation Land
- State & Local Conservation Land
- Private Conservation Land
- TPL Project - Randolph Community Forest
- TPL Projects added to the WMNF
- TPL Projects - Conservation Easements

0 0.5 1 2 Miles

Base data from NH GRANIT, Conservation Lands from SPNH and Town of Randolph parcel maps. TPL project boundaries displayed by The Trust for Public Land from town tax maps and TPL file maps, updated with conservation lands from GRANIT. Boundaries are approximate.

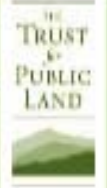
The Trust for Public Land White Mountains Conservation Initiative

Map received by The Trust for Public Land on April 12, 2007

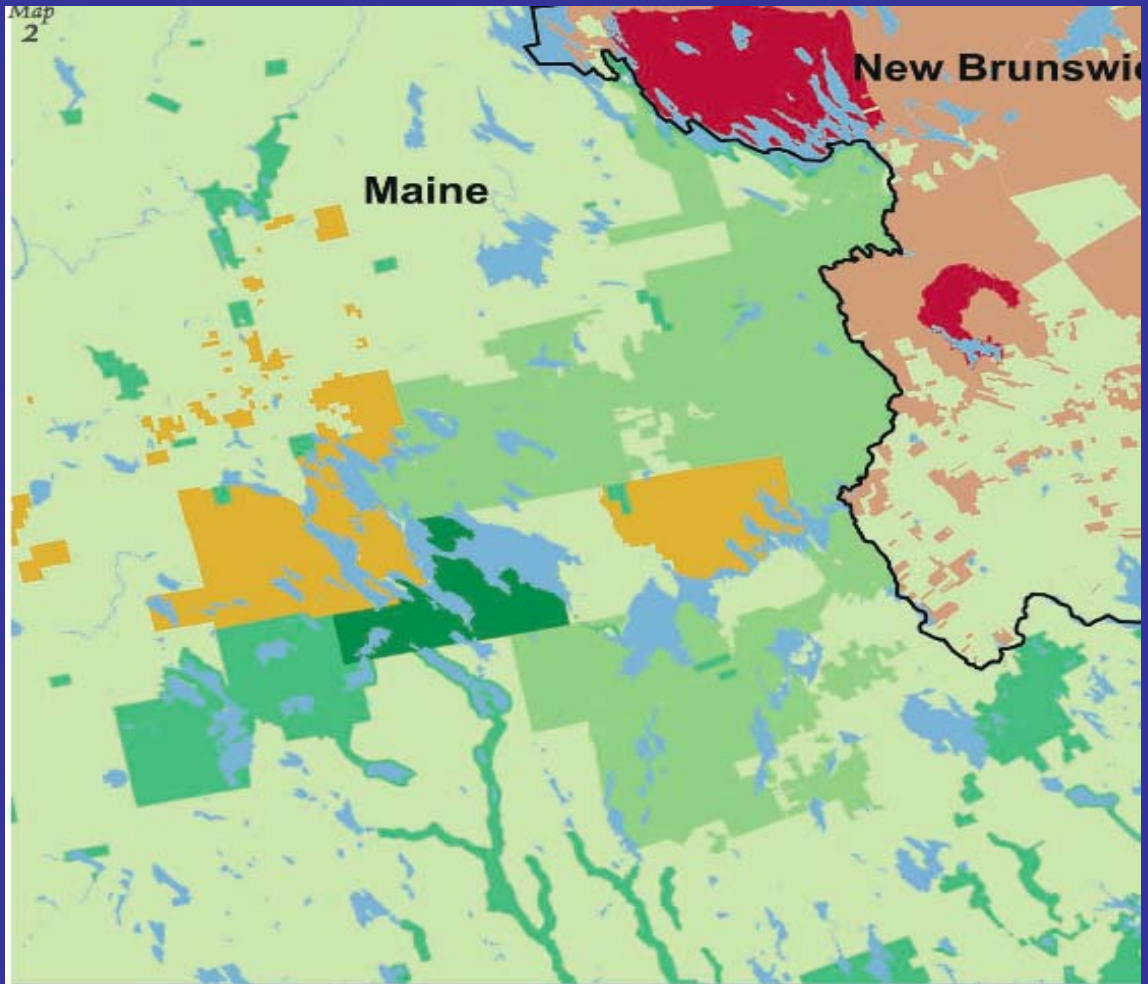
Created in ArcMap 9.3.1c
Map Projection: NAD 1983 StatePlane NH Feet

TPL, Trust for Public Land, and The Trust for Public Land logo are trademarks of The Trust for Public Land. Copyright © 2009 The Trust for Public Land. www.tpl.org



Information on this map is provided for purposes of discussion and visualization only.



Map
2



**Downeast Lakes
LAND TRUST**

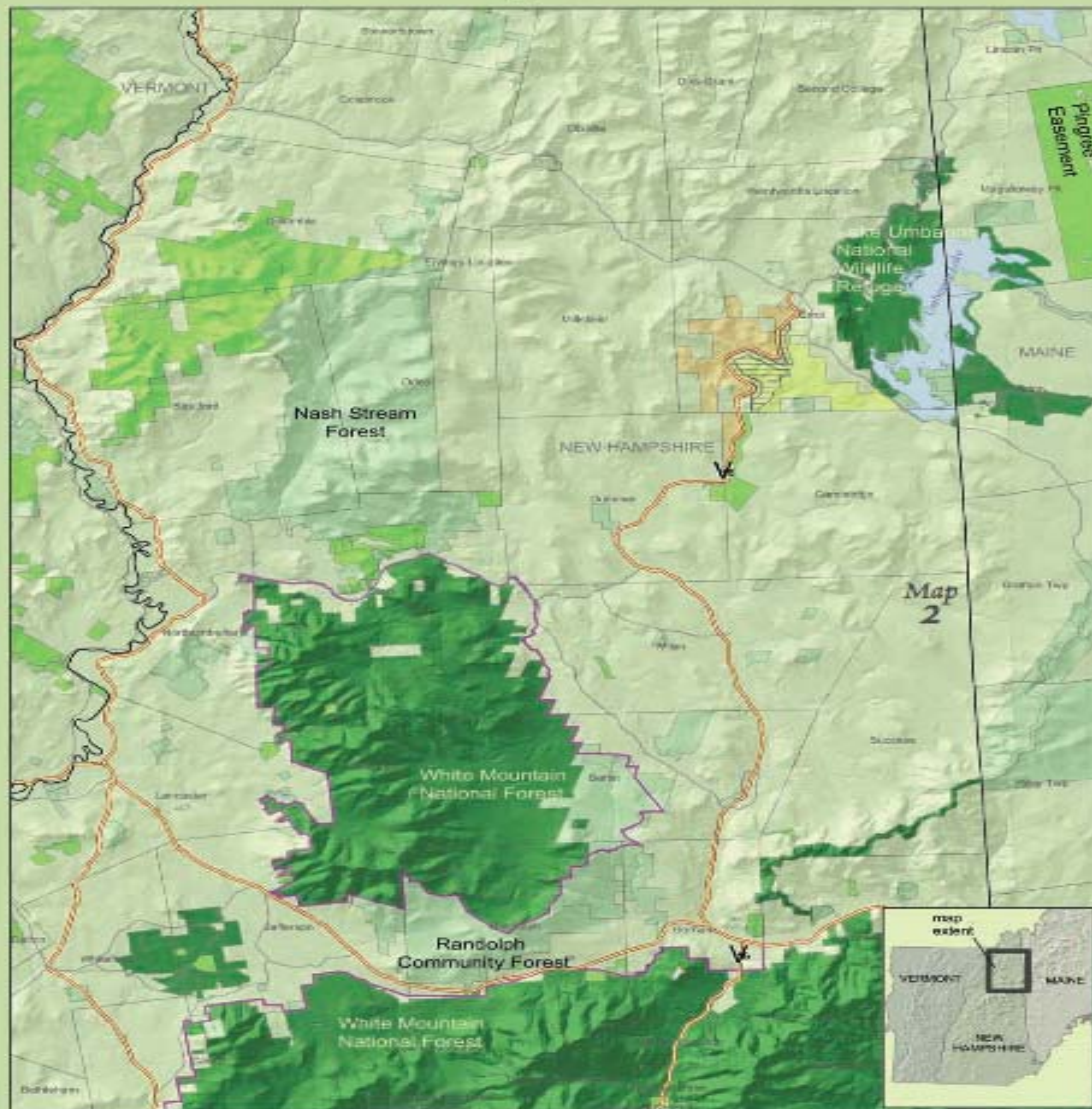
-  DLLT Farm Cove Community Forest
-  NEFF Wagner Easement
-  Maine Conservation Land
-  Native American
-  New Brunswick Protected Areas
-  New Brunswick Crown Lands



Map by DLLT 3/29/07
Data from Maine OGIS, NEFF, TNC, & Service NB



Errol Town Forest - Regional Conservation Lands



0 2.5 5 10 Miles

- | | | | |
|---|---------------------------------|---|--|
|  | Federal Conservation Land |  | Errol Town Forest |
|  | State & Local Conservation Land |  | Moulidgewock Brook TPL Project (with Forest Legacy Easement) |
|  | Private Conservation Land |  | Moulidgewock Brook TPL Project (in progress) |
|  | WMNF Proclamation Boundary | | |

Base Data from GRANIT. Boundaries are approximate.

Map created by the Trust for Public Land on April 12, 2007

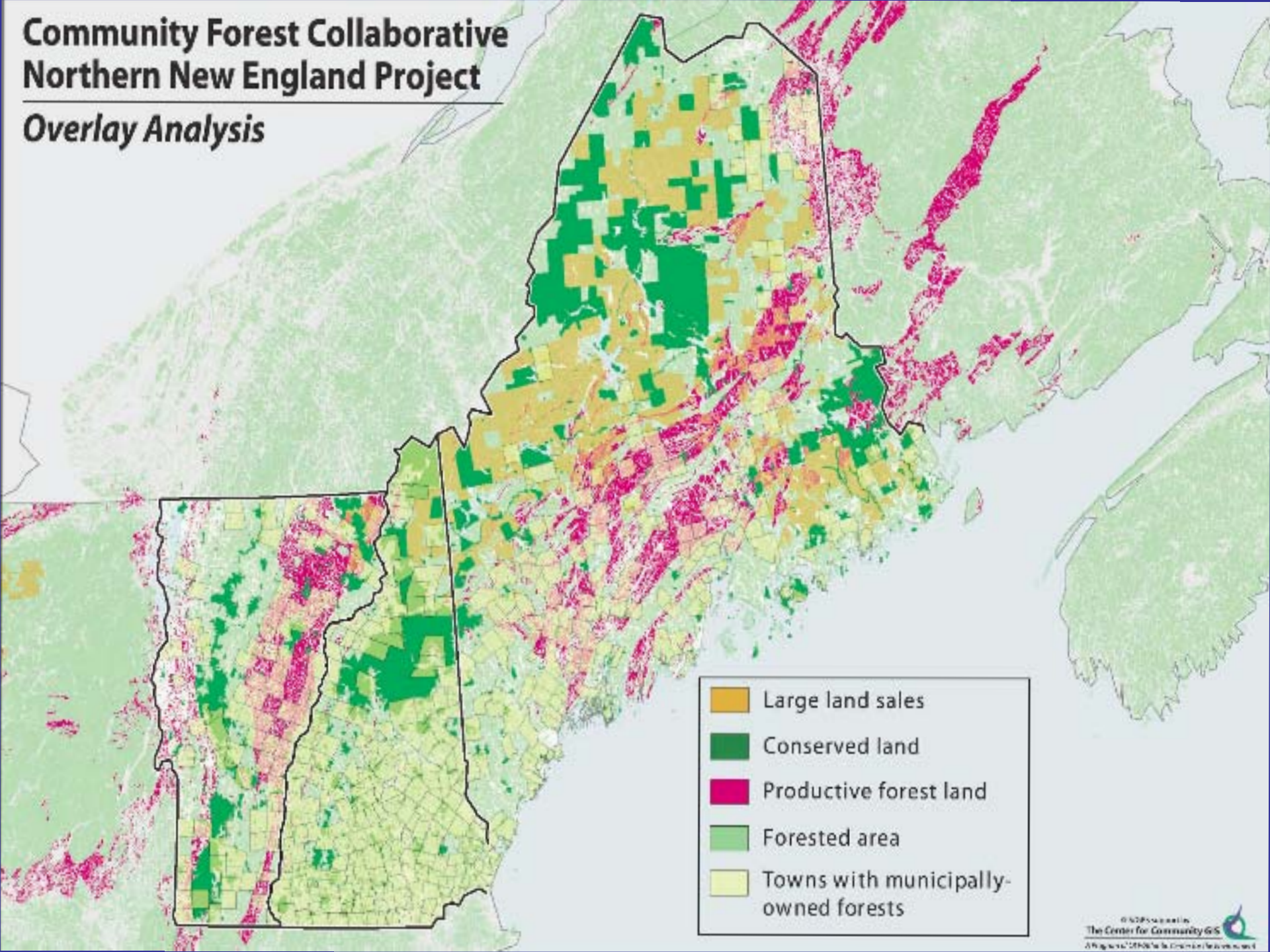
Created in ArcMap 9.1 SR
 Map Projection: NAD 1983 StatePlane NH feet
 TPL Trust for Public Land, and The Trust for Public Land logo are trademarks of The Trust for Public Land.
 Copyright © 2008 The Trust for Public Land. www.tpl.org

Information on this map is provided for purposes of discussion and illustration only.



Community Forest Collaborative Northern New England Project

Overlay Analysis



-  Large land sales
-  Conserved land
-  Productive forest land
-  Forested area
-  Towns with municipally-owned forests

COMMUNITY FORESTS AND CONSERVATION

- DE-FRAGMENT FORESTLAND
- BUFFER ECOLOGICALLY SENSITIVE LAND
- LINK EXIST CONSERVATION LAND
- COMPONENT IN MOSAIC FOR CONSERVATION OF LARGE LANDSCAPES
- STEWARDSHIP AND MONITORING