

Avatar 320 FT-IR

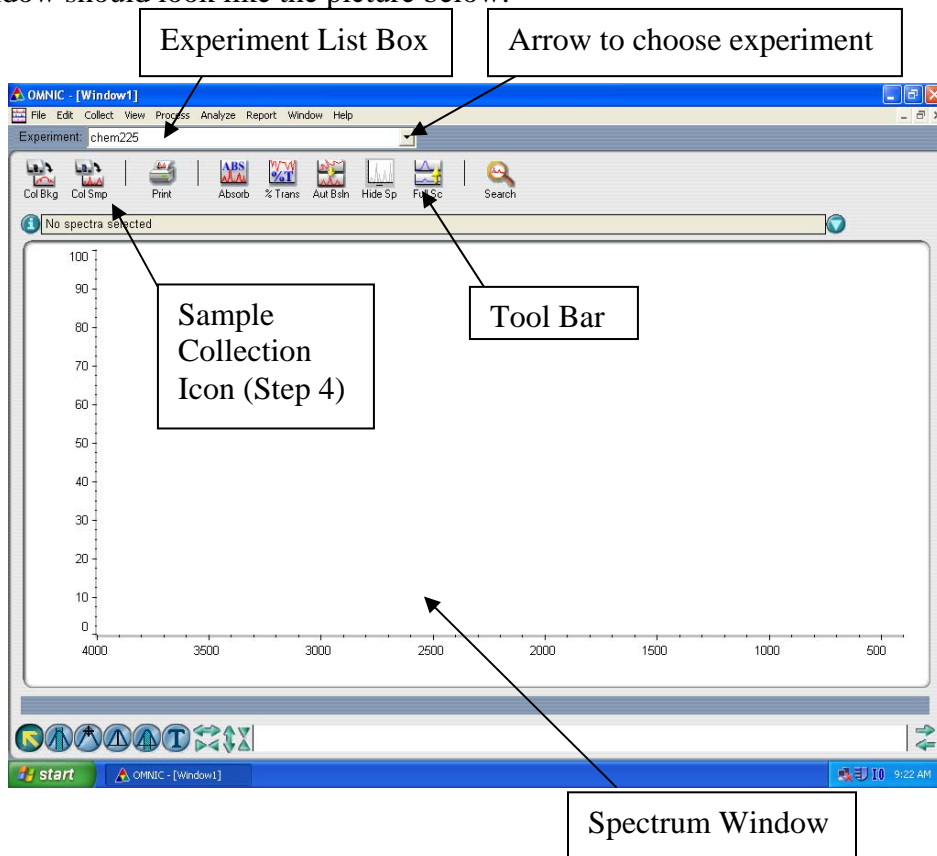
Updated May 28, 2008

PLEASE FOLLOW THE INSTRUCTIONS CAREFULLY. DO NOT ATTEMPT ANY OTHER OPERATION BESIDES THOSE LISTED HERE. LEAVE THE INSTRUMENT IN A MANNER SUCH THAT THE NEXT PERSON WILL BE ABLE TO USE IT EASILY.

1. If the computer is locked, hit Ctrl-Alt-Delete. This will bring up the login screen. If the username is “cislabs”, there is no password. Just click **OK** to unlock computer.
2. If the Omnic program is not already open:
From the desktop double click on the **OMNIC E.S.P.** icon (see picture below). This will open the Omnic program.



3. If the Omnic program is open:
The window should look like the picture below:



4. In the Omnic window find the Experiment list box. Put the cursor on the arrow, click and drag to choose “chem225” as the experiment set up to use. It may well already be the experiment name showing in the window, in which case you do not need to select it again.

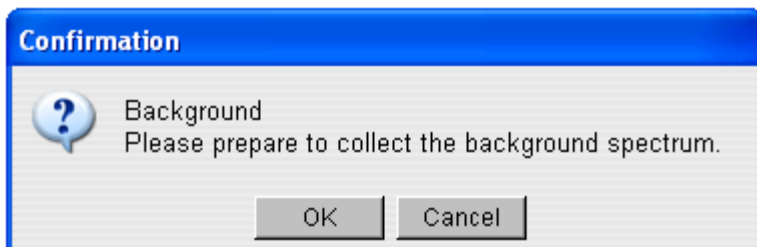
Always use the “chem225” experiment; it is a set of parameters that are proper for the experiments you will run. Please make no changes to these parameters.

From the tool bar, click on the icon shown below (it's the second icon from the left in the tool bar – see Figure in Step 2). This is the button to begin sample collection.

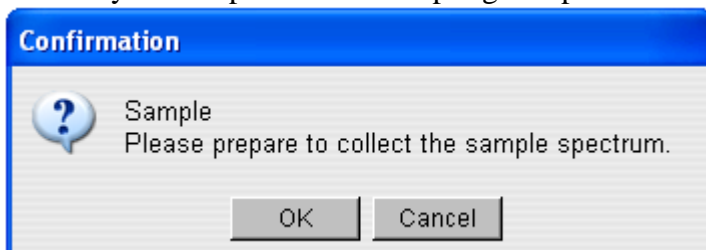


5. A box will come up prompting you to prepare to collect a background spectrum. Make sure the sample compartment of the IR is empty, and then click **OK**.

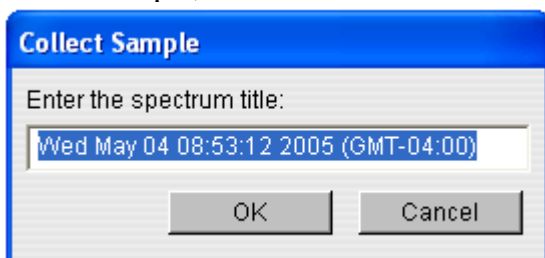
The IR will collect a background spectrum, which will show in the spectrum window.



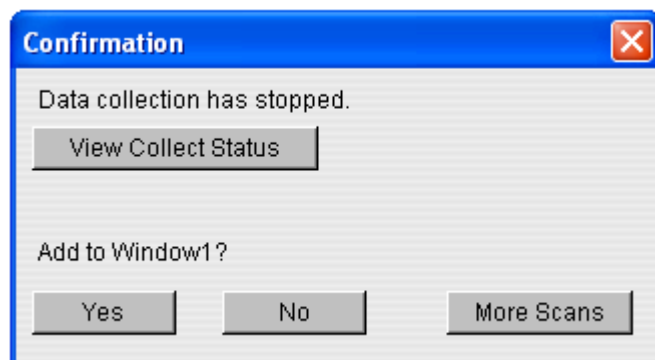
6. Over the background spectrum you will get a box prompting you to prepare to collect your sample spectrum. Slide your sample into the sampling compartment of the IR and then click **OK**.



7. The spectrum of your sample will be collected and now replace the background in the spectrum window.
8. A box will come up for you to enter a spectrum title. It would be wise to put your name or initials and the name of the sample, and then click **OK**.



9. A box will come up asking you to confirm that the spectrum will be placed in the current window. Click **Yes**.



10. The sample spectrum will be in the spectral window, and the title should appear in the experiment window as well as on the spectrum.
11. Click on the **Print** button of the tool bar, and then click **OK**.